

# InSight Handheld Spectroradiometer

Spectroradiometer from 380 to 780 nm with advanced photobiology metrics

**NEW!**



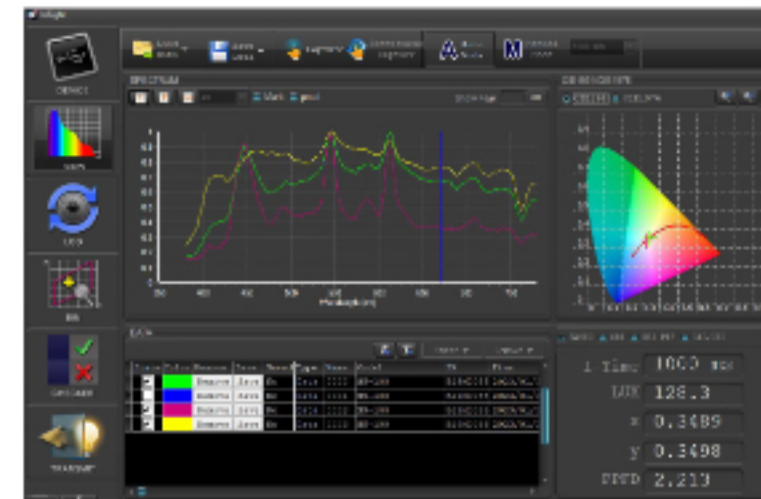
MS-100		
Wavelength Sensitivity	380 to 780 nm	
Spectral Bandwidth	Approximately 12 nm (half bandwidth)	
Wavelength Reproducibility	± 1 nm	
Measurement Range	PPFD: 0.1 to 3,500 $\mu\text{mol m}^{-2} \text{s}^{-1}$ ; Lux: 5 to 190,000 lx	
Illuminance Accuracy	± 5 %	
Color Accuracy	Illuminant A @ 2,856 K at 20,000 lx	
Color Repeatability		± 0.0025 in CIE 1931 x, y
CCT Accuracy		± 0.0005 in CIE 1931 x, y
CRI Accuracy @ Ra	± 2 %	
Stray Light	± 1.5 %	
Integration Time Range	- 25 dB max	
Operating Temperature	6 to 1,000 ms	
Storage Temperature	0 to 35°C, relative humidity 70 % or less without condensation	
Operation Mode	-10 to 40°C, relative humidity 70 % or less without condensation	
Display	Standalone Mode/Bluetooth Mode/USB Mode (PC Connection)	
Maximum Files	0.96" 128x64 mono OLED	
Data Interface	1.2 million files @ 8 GB Micro-SD card (Excel)	
Software	Mini USB port (USB 2.0); Bluetooth 3.0 and 4.0 compatible with iOS and Android	
	Apogee InSight (available for PC, iOS, and Android)	

## Powerful Photobiology Tool

Self-powered and portable, the InSight instantly measures and displays the most important metrics for serious growers. View basic data on the unit's screen, see enhanced graphs on your PC or phone, and take sample or log measurements over time.

## Measurement Modes

- PPFD
- ePPFD
- YPFD
- TPFD
- PFD-UV
- PFD-B
- PFD-G
- PFD-R
- PFD-FR
- FR F
- PPE
- iPPE
- CFI
- CRI
- CCT
- Lux
- R F-R R
- Foot candle
- LambdaP
- LambdaD
- CIE 1931 x & y
- CIE 1976 u' & v'



## InSight Software

Connect to your PC to view and analyze measurements with the Apogee InSight software or use the app (iOS or Android). [apogeeinstruments.com/downloads/](http://apogeeinstruments.com/downloads/)